


Department of Engineering  
Dan Gaillet, P.E., County Engineer

3137 South Liberty Street, Canton, MS 39046  
Office (601) 790-2525 FAX (601) 859-3430

## MEMORANDUM

October 29, 2018

To: Sheila Jones, Supervisor, District I  
Trey Baxter, Supervisor, District II  
Gerald Steen, Supervisor, District III  
David Bishop, Supervisor, District IV  
Paul Griffin, Supervisor, District V

From: Dan Gaillet, P.E.   
County Engineer

Re: Sink Hole  
115 Stillhouse Creek Drive  
Stillhouse Creek Subdivision

A sink hole has formed due to the failure of a 42" pipe that carries roadway storm water from Stillhouse Creek Drive, across property at 115 Stillhouse Creek Drive.

The Engineering Department has determined that the pipes have separated which is causing a dangerous sink hole. However, a full determination of damage will take place after authorization is granted to work within this drainage easement.

It is the recommendation of the Engineering Department that repairs be made to ensure that storm water is moved from point-to-point to prevent damage to the roadway and further damage the storm water system.

Therefore, it is in the best interest of the County and the public's health, safety and welfare to make the repairs, based on:

- Separated storm water pipes;
- Water is unable to flow freely off of Stillhouse Creek Drive; and
- A large sink hole has formed over the pipe failure.

---

SHEILA JONES  
District One

TREY BAXTER  
District Two

GERALD STEEN  
District Three

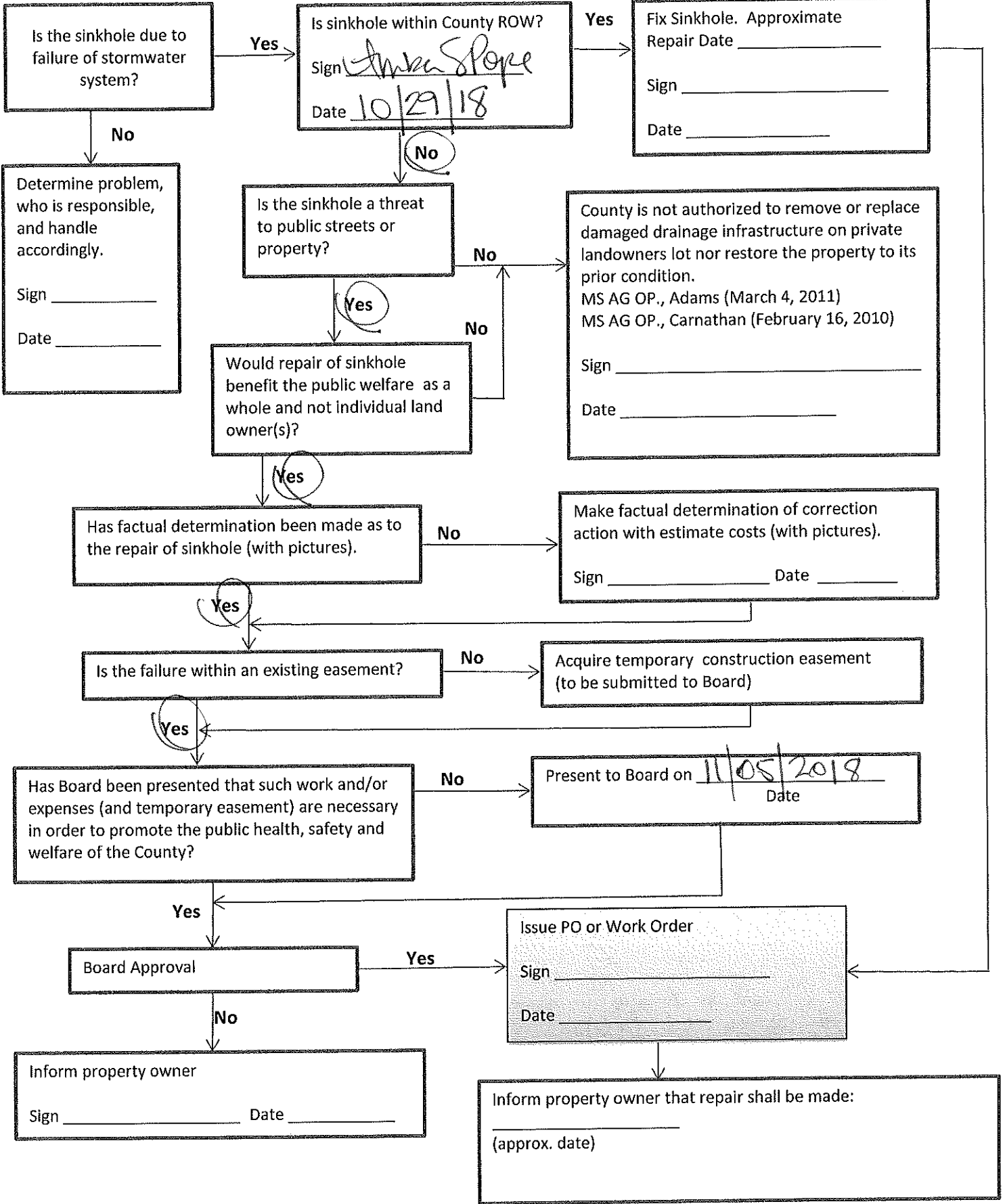
DAVID BISHOP  
District Four

PAUL GRIFFIN  
District Five

# SINKHOLE FLOW CHART

LOCATION: 115 Stillhouse Creek Dr

DATE: 10/29/18



**STILLHOUSE CREEK, PHASE I**  
 SITUATED IN THE E 1/2 OF SECTION 19,  
 T8N-R2E, MADISON COUNTY, MISSISSIPPI

E-85A  
 8046

SURVEYOR'S CERTIFICATE OF COMPLIANCE  
 STATE OF MISSISSIPPI  
 COUNTY OF MADISON

I, Ronald C. McMaster, Professional Engineer and Surveyor, do hereby certify that the survey and subdivision shown on this plat and correct representation of a survey to the accuracy designated in the subdivision regulations for Madison County, Mississippi.

Witness my signature this 25th day of April, 2008.

Ronald C. McMaster, Professional Engineer and Surveyor

CERTIFICATE OF COMPLETION  
 STATE OF MISSISSIPPI  
 COUNTY OF MADISON

We, Arthur Johnson, Chetney Clark, and Ronald C. McMaster, Professional Engineer and Surveyor, with the enclosed instrument, on this 7th day of May, 2008, have caused a true and correct copy of said map to be filed.

Given under my hand and seal of office this 7th day of May, 2008.

Ronald C. McMaster, P.E., S.

By: *Arthur Johnson*

By: *Chetney Clark*

By: *Ronald C. McMaster*

By: *Arthur Johnson*

By: *Chetney Clark*

By: *Ronald C. McMaster*

By: *Arthur Johnson*

By: *Chetney Clark*

By: *Ronald C. McMaster*

By: *Arthur Johnson*

By: *Chetney Clark*

By: *Ronald C. McMaster*

By: *Arthur Johnson*

By: *Chetney Clark*

By: *Ronald C. McMaster*

By: *Arthur Johnson*

By: *Chetney Clark*

By: *Ronald C. McMaster*

By: *Arthur Johnson*

By: *Chetney Clark*

By: *Ronald C. McMaster*

By: *Arthur Johnson*

By: *Chetney Clark*

By: *Ronald C. McMaster*

By: *Arthur Johnson*

By: *Chetney Clark*

By: *Ronald C. McMaster*

By: *Arthur Johnson*

By: *Chetney Clark*

By: *Ronald C. McMaster*

By: *Arthur Johnson*

By: *Chetney Clark*

By: *Ronald C. McMaster*

By: *Arthur Johnson*

By: *Chetney Clark*

By: *Ronald C. McMaster*

By: *Arthur Johnson*

By: *Chetney Clark*

By: *Ronald C. McMaster*

By: *Arthur Johnson*

By: *Chetney Clark*

By: *Ronald C. McMaster*

By: *Arthur Johnson*

By: *Chetney Clark*

By: *Ronald C. McMaster*

By: *Arthur Johnson*

By: *Chetney Clark*

By: *Ronald C. McMaster*

By: *Arthur Johnson*

By: *Chetney Clark*

By: *Ronald C. McMaster*

By: *Arthur Johnson*

By: *Chetney Clark*

By: *Ronald C. McMaster*

By: *Arthur Johnson*

By: *Chetney Clark*

By: *Ronald C. McMaster*

By: *Arthur Johnson*

By: *Chetney Clark*

By: *Ronald C. McMaster*

By: *Arthur Johnson*

By: *Chetney Clark*

By: *Ronald C. McMaster*

By: *Arthur Johnson*

By: *Chetney Clark*

By: *Ronald C. McMaster*

Class "B" Survey  
 Bearings Based on Survey  
 Grade GPS Observations  
 Taken July 16, 2007  
 Our Job No. M-1642  
 Date: April 23, 2008  
 Scale: 1"=100'  
 POB - Point of Beginning  
 POC - Point of Commencement  
 PIP - Point of Intersection  
 PIR - Point of Intersection  
 PIR - Point of Intersection  
 PIR - Point of Intersection

Scale in Feet  
 0 100 200

25 Front Sabeak  
 7.5 Side Sabeak  
 25 Rear Sabeak

TYPICAL LOT DETAIL

25 Front Sabeak  
 7.5 Side Sabeak  
 25 Rear Sabeak

25 Front Sabeak  
 7.5 Side Sabeak  
 25 Rear Sabeak

25 Front Sabeak  
 7.5 Side Sabeak  
 25 Rear Sabeak

25 Front Sabeak  
 7.5 Side Sabeak  
 25 Rear Sabeak

25 Front Sabeak  
 7.5 Side Sabeak  
 25 Rear Sabeak

25 Front Sabeak  
 7.5 Side Sabeak  
 25 Rear Sabeak

25 Front Sabeak  
 7.5 Side Sabeak  
 25 Rear Sabeak

25 Front Sabeak  
 7.5 Side Sabeak  
 25 Rear Sabeak

25 Front Sabeak  
 7.5 Side Sabeak  
 25 Rear Sabeak

25 Front Sabeak  
 7.5 Side Sabeak  
 25 Rear Sabeak

25 Front Sabeak  
 7.5 Side Sabeak  
 25 Rear Sabeak

25 Front Sabeak  
 7.5 Side Sabeak  
 25 Rear Sabeak

25 Front Sabeak  
 7.5 Side Sabeak  
 25 Rear Sabeak

25 Front Sabeak  
 7.5 Side Sabeak  
 25 Rear Sabeak

25 Front Sabeak  
 7.5 Side Sabeak  
 25 Rear Sabeak

25 Front Sabeak  
 7.5 Side Sabeak  
 25 Rear Sabeak

25 Front Sabeak  
 7.5 Side Sabeak  
 25 Rear Sabeak

25 Front Sabeak  
 7.5 Side Sabeak  
 25 Rear Sabeak

25 Front Sabeak  
 7.5 Side Sabeak  
 25 Rear Sabeak

25 Front Sabeak  
 7.5 Side Sabeak  
 25 Rear Sabeak

25 Front Sabeak  
 7.5 Side Sabeak  
 25 Rear Sabeak

25 Front Sabeak  
 7.5 Side Sabeak  
 25 Rear Sabeak

25 Front Sabeak  
 7.5 Side Sabeak  
 25 Rear Sabeak

25 Front Sabeak  
 7.5 Side Sabeak  
 25 Rear Sabeak

25 Front Sabeak  
 7.5 Side Sabeak  
 25 Rear Sabeak

25 Front Sabeak  
 7.5 Side Sabeak  
 25 Rear Sabeak

25 Front Sabeak  
 7.5 Side Sabeak  
 25 Rear Sabeak

25 Front Sabeak  
 7.5 Side Sabeak  
 25 Rear Sabeak

25 Front Sabeak  
 7.5 Side Sabeak  
 25 Rear Sabeak

25 Front Sabeak  
 7.5 Side Sabeak  
 25 Rear Sabeak

25 Front Sabeak  
 7.5 Side Sabeak  
 25 Rear Sabeak

25 Front Sabeak  
 7.5 Side Sabeak  
 25 Rear Sabeak

25 Front Sabeak  
 7.5 Side Sabeak  
 25 Rear Sabeak

25 Front Sabeak  
 7.5 Side Sabeak  
 25 Rear Sabeak

25 Front Sabeak  
 7.5 Side Sabeak  
 25 Rear Sabeak

25 Front Sabeak  
 7.5 Side Sabeak  
 25 Rear Sabeak

25 Front Sabeak  
 7.5 Side Sabeak  
 25 Rear Sabeak

25 Front Sabeak  
 7.5 Side Sabeak  
 25 Rear Sabeak

25 Front Sabeak  
 7.5 Side Sabeak  
 25 Rear Sabeak

25 Front Sabeak  
 7.5 Side Sabeak  
 25 Rear Sabeak

25 Front Sabeak  
 7.5 Side Sabeak  
 25 Rear Sabeak

25 Front Sabeak  
 7.5 Side Sabeak  
 25 Rear Sabeak

25 Front Sabeak  
 7.5 Side Sabeak  
 25 Rear Sabeak

25 Front Sabeak  
 7.5 Side Sabeak  
 25 Rear Sabeak

25 Front Sabeak  
 7.5 Side Sabeak  
 25 Rear Sabeak

25 Front Sabeak  
 7.5 Side Sabeak  
 25 Rear Sabeak

25 Front Sabeak  
 7.5 Side Sabeak  
 25 Rear Sabeak

25 Front Sabeak  
 7.5 Side Sabeak  
 25 Rear Sabeak

25 Front Sabeak  
 7.5 Side Sabeak  
 25 Rear Sabeak

25 Front Sabeak  
 7.5 Side Sabeak  
 25 Rear Sabeak

25 Front Sabeak  
 7.5 Side Sabeak  
 25 Rear Sabeak

25 Front Sabeak  
 7.5 Side Sabeak  
 25 Rear Sabeak

25 Front Sabeak  
 7.5 Side Sabeak  
 25 Rear Sabeak

25 Front Sabeak  
 7.5 Side Sabeak  
 25 Rear Sabeak

25 Front Sabeak  
 7.5 Side Sabeak  
 25 Rear Sabeak

25 Front Sabeak  
 7.5 Side Sabeak  
 25 Rear Sabeak

25 Front Sabeak  
 7.5 Side Sabeak  
 25 Rear Sabeak

25 Front Sabeak  
 7.5 Side Sabeak  
 25 Rear Sabeak

25 Front Sabeak  
 7.5 Side Sabeak  
 25 Rear Sabeak

25 Front Sabeak  
 7.5 Side Sabeak  
 25 Rear Sabeak

25 Front Sabeak  
 7.5 Side Sabeak  
 25 Rear Sabeak

25 Front Sabeak  
 7.5 Side Sabeak  
 25 Rear Sabeak

25 Front Sabeak  
 7.5 Side Sabeak  
 25 Rear Sabeak

25 Front Sabeak  
 7.5 Side Sabeak  
 25 Rear Sabeak

25 Front Sabeak  
 7.5 Side Sabeak  
 25 Rear Sabeak

25 Front Sabeak  
 7.5 Side Sabeak  
 25 Rear Sabeak

25 Front Sabeak  
 7.5 Side Sabeak  
 25 Rear Sabeak

25 Front Sabeak  
 7.5 Side Sabeak  
 25 Rear Sabeak

25 Front Sabeak  
 7.5 Side Sabeak  
 25 Rear Sabeak

25 Front Sabeak  
 7.5 Side Sabeak  
 25 Rear Sabeak

25 Front Sabeak  
 7.5 Side Sabeak  
 25 Rear Sabeak

25 Front Sabeak  
 7.5 Side Sabeak  
 25 Rear Sabeak

25 Front Sabeak  
 7.5 Side Sabeak  
 25 Rear Sabeak

25 Front Sabeak  
 7.5 Side Sabeak  
 25 Rear Sabeak

25 Front Sabeak  
 7.5 Side Sabeak  
 25 Rear Sabeak

25 Front Sabeak  
 7.5 Side Sabeak  
 25 Rear Sabeak

25 Front Sabeak  
 7.5 Side Sabeak  
 25 Rear Sabeak

25 Front Sabeak  
 7.5 Side Sabeak  
 25 Rear Sabeak

25 Front Sabeak  
 7.5 Side Sabeak  
 25 Rear Sabeak

25 Front Sabeak  
 7.5 Side Sabeak  
 25 Rear Sabeak

25 Front Sabeak  
 7.5 Side Sabeak  
 25 Rear Sabeak

25 Front Sabeak  
 7.5 Side Sabeak  
 25 Rear Sabeak

25 Front Sabeak  
 7.5 Side Sabeak  
 25 Rear Sabeak

25 Front Sabeak  
 7.5 Side Sabeak  
 25 Rear Sabeak

25 Front Sabeak  
 7.5 Side Sabeak  
 25 Rear Sabeak

25 Front Sabeak  
 7.5 Side Sabeak  
 25 Rear Sabeak

25 Front Sabeak  
 7.5 Side Sabeak  
 25 Rear Sabeak

25 Front Sabeak  
 7.5 Side Sabeak  
 25 Rear Sabeak

25 Front Sabeak  
 7.5 Side Sabeak  
 25 Rear Sabeak

25 Front Sabeak  
 7.5 Side Sabeak  
 25 Rear Sabeak

25 Front Sabeak  
 7.5 Side Sabeak  
 25 Rear Sabeak

25 Front Sabeak  
 7.5 Side Sabeak  
 25 Rear Sabeak

McMASTER & ASSOCIATES, INC.  
 CIVIL ENGINEERS AND LAND SURVEYORS  
 One Woodgreen Place  
 Madison, MS 39110  
 Tel. 501-565-1090  
 Fax 501-565-1091

128 East Jefferson Street  
 Yazoo City, MS 39194  
 Telephone 662-748-1080

Our Job No. M-1642  
 Date: April 23, 2008  
 Scale: 1"=100'  
 POB - Point of Beginning  
 POC - Point of Commencement  
 PIP - Point of Intersection  
 PIR - Point of Intersection

25 Front Sabeak  
 7.5 Side Sabeak  
 25 Rear Sabeak

TYPICAL LOT DETAIL

25 Front Sabeak  
 7.5 Side Sabeak  
 25 Rear Sabeak

25 Front Sabeak  
 7.5 Side Sabeak  
 25 Rear Sabeak

25 Front Sabeak  
 7.5 Side Sabeak  
 25 Rear Sabeak

25 Front Sabeak  
 7.5 Side Sabeak  
 25 Rear Sabeak

25 Front Sabeak  
 7.5 Side Sabeak  
 25 Rear Sabeak

25 Front Sabeak  
 7.5 Side Sabeak  
 25 Rear Sabeak

25 Front Sabeak  
 7.5 Side Sabeak  
 25 Rear Sabeak

25 Front Sabeak  
 7.5 Side Sabeak  
 25 Rear Sabeak

25 Front Sabeak  
 7.5 Side Sabeak  
 25 Rear Sabeak

25 Front Sabeak  
 7.5 Side Sabeak  
 25 Rear Sabeak

25 Front Sabeak  
 7.5 Side Sabeak  
 25 Rear Sabeak

25 Front Sabeak  
 7.5 Side Sabeak  
 25 Rear Sabeak

25 Front Sabeak  
 7.5 Side Sabeak  
 25 Rear Sabeak

25 Front Sabeak  
 7.5 Side Sabeak  
 25 Rear Sabeak

25 Front Sabeak  
 7.5 Side Sabeak  
 25 Rear Sabeak

25 Front Sabeak  
 7.5 Side Sabeak  
 25 Rear Sabeak

25 Front Sabeak  
 7.5 Side Sabeak  
 25 Rear Sabeak

25 Front Sabeak  
 7.5 Side Sabeak  
 25 Rear Sabeak

25 Front Sabeak  
 7.5 Side Sabeak  
 25 Rear Sabeak

Class "B" Survey  
 Bearings Based on Survey  
 Grade GPS Observations  
 Taken July 16, 2007  
 Our Job No. M-1642  
 Date: April 23, 2008  
 Scale: 1"=100'  
 POB - Point of Beginning  
 POC - Point of Commencement  
 PIP - Point of Intersection  
 PIR - Point of Intersection

Scale in Feet  
 0 100 200

25 Front Sabeak  
 7.5 Side Sabeak  
 25 Rear Sabeak

TYPICAL LOT DETAIL

25 Front Sabeak  
 7.5 Side Sabeak  
 25 Rear Sabeak

25 Front Sabeak  
 7.5 Side Sabeak  
 25 Rear Sabeak

25 Front Sabeak  
 7.5 Side Sabeak  
 25 Rear Sabeak

# UTILITY CONSTRUCTORS, INC.

*Utility & Commercial Contractors*

## Quote

October 24, 2018

To: Shelton Marberry  
Madison County Board of Supervisors  
125 W. North Street  
Canton, MS 39046

Contractor:  
Utility Constructors, Inc.  
P.O. Box 13627  
Jackson, MS 39236

**Reference:** Repair a collapsed storm sewer in Stillhouse Creek Subdivision

This is a quote to repair a collapsed storm sewer pipe and catch basin and remove fencing and replacing as necessary in Stillhouse Creek Subdivision in Madison County, MS.

All Labor, Material, Equipment and etc. to perform work

**Total Lump Sum**

**\$31,980.00**

Accepted By

Company: \_\_\_\_\_

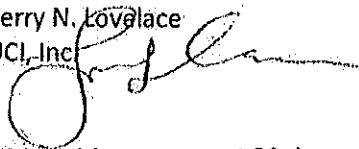
Signature: \_\_\_\_\_

Print: \_\_\_\_\_

Date: \_\_\_\_\_

P.O. No: \_\_\_\_\_

Terry N. Lovelace  
UCI, Inc.



Payment terms are net 30 days.

Proposal valid for 30 days. Utility Constructors requires 7 days' notice to schedule manpower, equipment and One-Call's.

# Quote

Madison County Board of Supervisors  
3137 South Liberty Street  
Canton, MS 39046

Attn: Shelton Marberry  
E-mail: [shelton.marberry@madison-co.com](mailto:shelton.marberry@madison-co.com)  
Re: Steel House Creek Sub  
Date: 10/24/18

From:



218 Concord Road  
Pelahatchie, MS 39145  
601-720-6913  
John Ramsay - Owner

PO#:

## Steel House Creek Subdivision:

Remove and Reinstall wood fence upon completion of job.  
Remove approximately 20'-40' of crushed 36" ADS pipe  
Pour concrete collars on 2 existing connections  
Build a 2'X2' (saddle) area inlet on top of pipe  
Re-sod area of yard that was affected by construction  
Replace any curb (up to 15') that was damaged during construction  
Not responsible for any damage outside of Madison County drainage easement  
Madison County to obtain any permits or easements through private property

**Total            \$32,450**

Any questions please contact John at the above number.  
Call for any future needs!

*Thank You for your Business!*